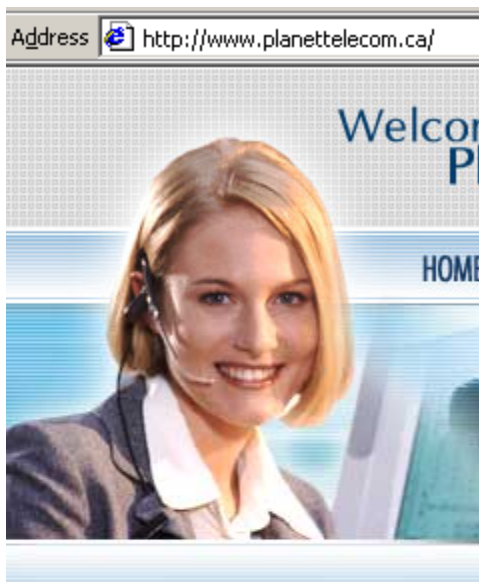


To use your account or calling card using Microsoft NetMeeting, Please follow these steps for easy access to any telephone worldwide using a state of the art hybrid Voice over IP / TDM networks.

First, you must configure your Planet Telecom account/calling card to make use of NetMeeting. To do this, first go to www.planettelecom.ca



ACCOUNT LOGIN

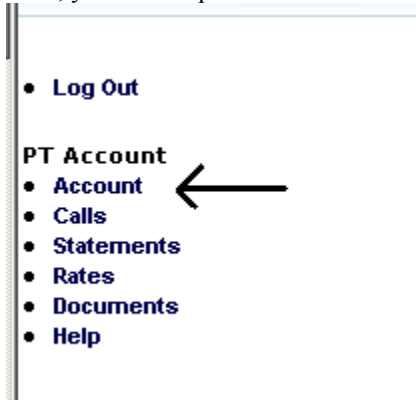
User ID:

Password:

ENTER

Enter the UserID (located under the grey 'scratch off' material on the back of your calling card) in the field : User ID, then click the enter button.

Next, you will be presented with this screen:



Clicking on the * **Account** link will take you to the following page.....

8 10002

- Log Out

Account

PT Account

- Account
- Calls
- Statements
- Rates
- Documents
- Help

→ Update

Account Name:	Demo
Address:	12345-678 Street
City:	Anytown
Postal Code:	T2T-B0B
Contact Name:	Albert Einstein
Contact Phone:	+1.999.999.9999
Contact Fax:	+1.999.999.9998
Contact E-Mail:	Albert@EMC.com
Status:	Active
Statement Delivery:	None
Currency:	USD
Last Used:	
Switch Balance:	\$0
No Ident CLID record found for this account.	

Next you need to click on the Update button

Then you need to update the New Ident CLID: field, simply enter your first name, a space, then your lastname, then select H.323 in the next field

Switch Balance:	\$0
No Ident CLID record found for this account.	
New Ident CLID:	Albert Einstein H.323

Then click the save button....

→ Save

Account Name:	Demo
Address:	12345-678 Street
City:	Anytown

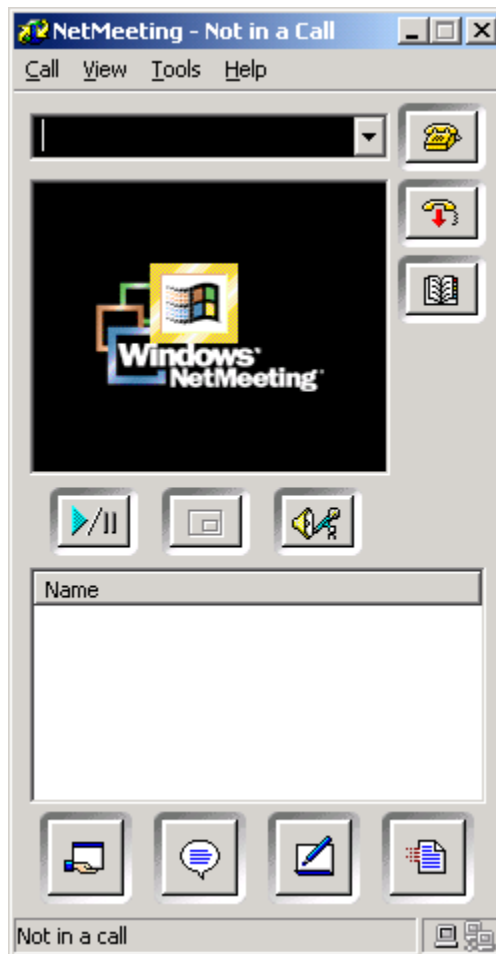
Now you must configure NetMeeting.....

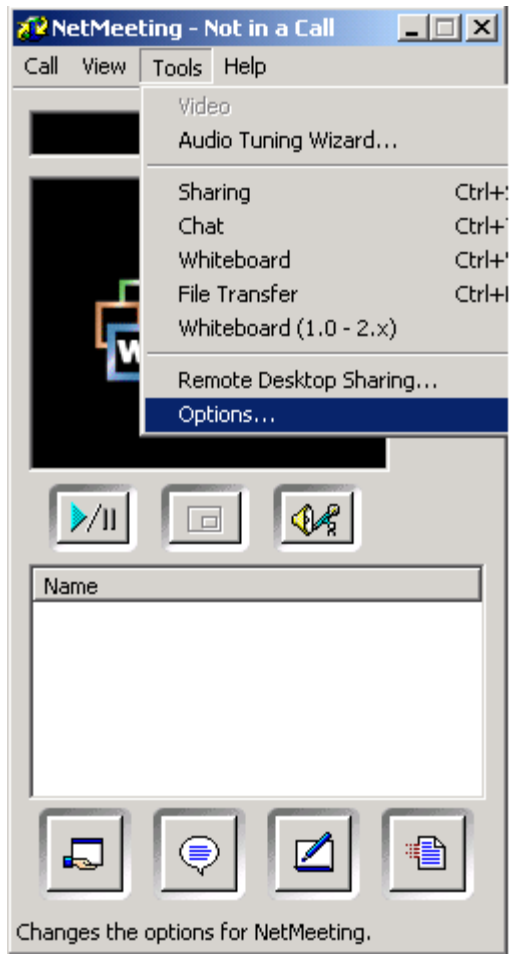
INITIAL NetMeeting SETTINGS

Please note: If your internet connection is behind a firewall or network address translation device, NetMeeting may not work. This is due to different types of devices being unable to handle different 'layers' of the data. For best results, try and use a public IP address.

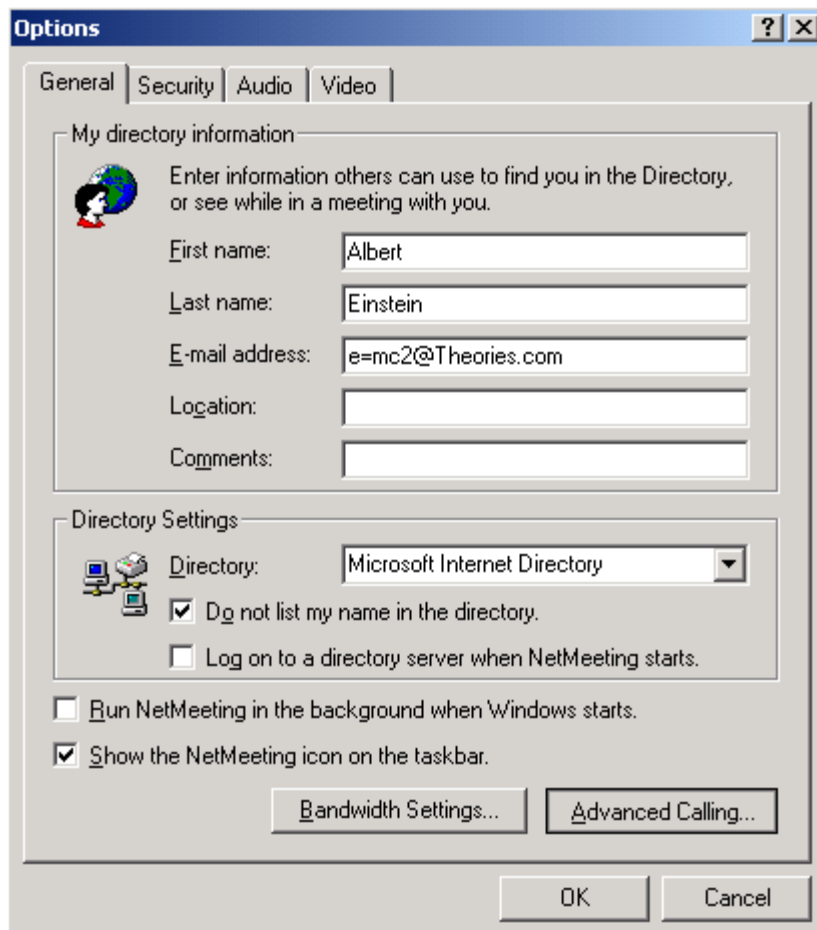
You should find NetMeeting installed in most of the later Windows versions, look in <Start>-Programs/Accessories/Communications/NetMeeting. If you do not have NetMeeting installed, visit www.microsoft.com/windows/netmeeting/ to obtain a copy. Download and install the application.

Launch the application and you should be presented with this screen. The first steps involve configuring NetMeeting for use.



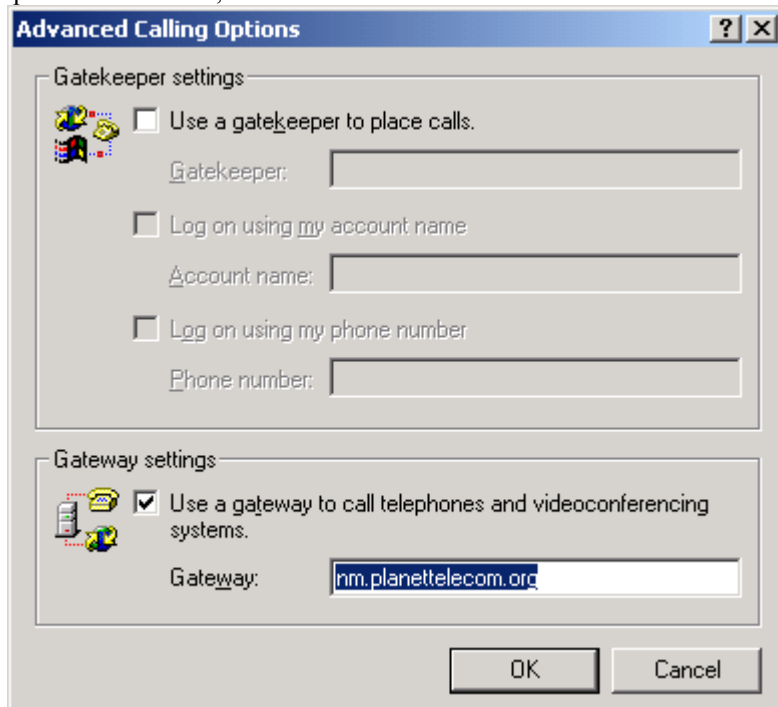


Select the Tools menu and these selections appear, select Options...

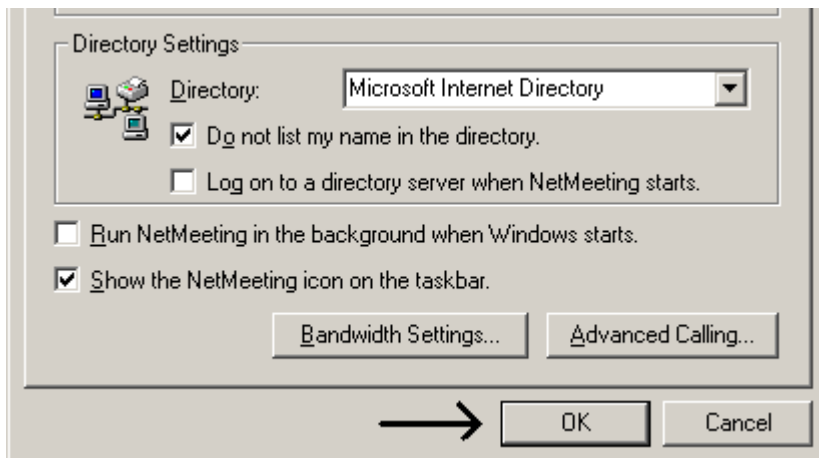


From the General settings, click on the button Advanced Calling...

Check the box in Gateway settings, then enter the Gateway DNS name in the Gateway field nm.planettelecom.com, then click OK.

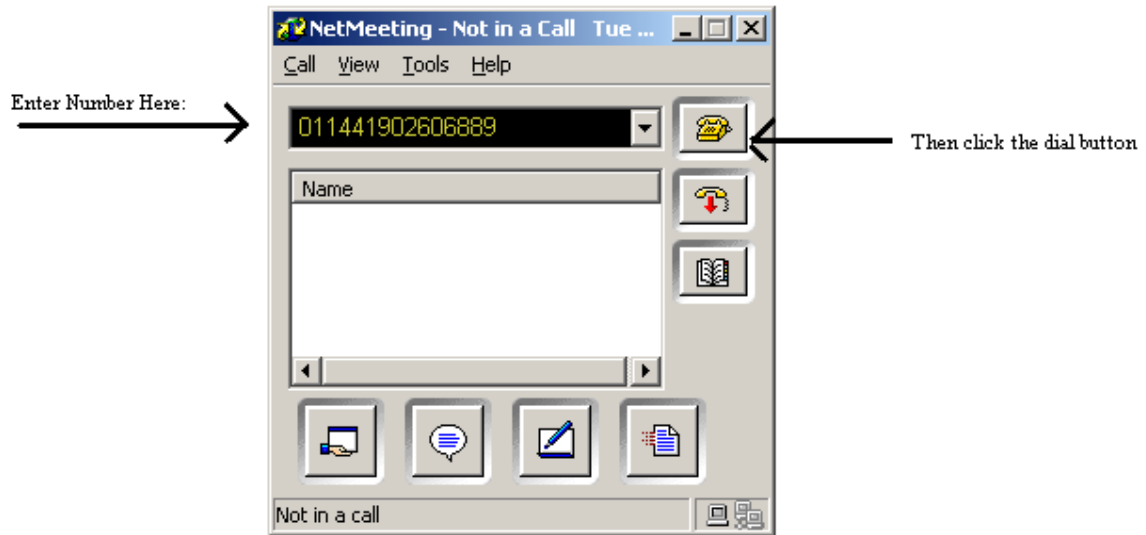


Then on the next screen, also click OK



Next, time to make a call..... Please ensure you have a microphone and earphone connected and tested.

Remember, you must enter numbers as if you were in North America... for example, calling the USA, Canada or the Caribbean '1AAAANNNNNNN' where 'AAA' equals a 3 digit area code and 'NNNNNNN' equals a seven digit number. For calling other locations you must enter the prefix '011'. To call London for example, dial 0114420512345678.



Thentalk